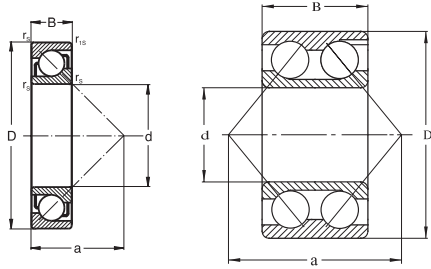


Single and double row | Jedno i dwurzędowe

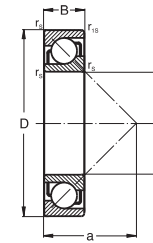


SUFFIX Characters placed after basic designation

Znaki umieszczone za oznaczeniem podstawowym

A	modified internal desing – contact angle 30° ● kąt działania łożyska $\alpha = 30^\circ$
B	modified internal desing – contact angle 40° ● kąt działania łożyska $\alpha = 40^\circ$
2RS	rubber seals at both sides of the bearing ● uszczelki gumowe po obu stronach łożyska
P6	accuracy to ISO tolerance class 6 ● klasa dokładności P6 wg tolerancji ISO (wyższa niż normalna P0)
P5	accuracy to ISO tolerance class 5 ● klasa dokładności P5 wg tolerancji ISO (wyższa niż P6)
X1	dimensions non conformity with the international standard ● wymiary zewnętrzne łożyska niezgodne z normami międzynarodowymi
MA	solid brass cage centred in the outer ring ● koszyk masywny mosiężny prowadzony na pierścieniu zewnętrznym
FA	solid steel cage centred in the outer ring ● koszyk masywny stalowy prowadzony na pierścieniu zewnętrznym
V	bearing without cage with full quantity of rolling elements ● łożysko bez kosza z pełną ilością kulek
N2M	bearing with two retaining slots and brass cage ● łożysko z dwoma rowkami ustalającymi (co 180°) i z koszykiem masywnym mosiężnym
TNG	polyamid cage ● kosz poliamidowy

Single row | Jednorzędowe

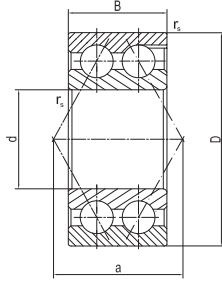


DIMENSIONS WYMIARY GŁÓWNE						BASIC LOAD RATING NOŚNOŚĆ		LIMITING SPEEDS OBROTOWY GRANICZNE		MASS MASA	BASIC DESIGNATIONS OZNACZENIE PODSTAWOWE
d	D	B	r _s	r _{rs}	a	dynamic dynamiczna C	static statyczna C ₀	grease w smarze	oil w oleju	~	
mm						kN		r/min		kg	
17	40	12	0.6	0.3	16.0	10.8	5.30	14 000	19 000	0.070	7203B
	47	14	1.0	0.6	20.5	14.8	7.15	12 000	17 000	0.120	7303B
20	47	14	1.0	0.6	21.0	13.3	6.55	11 000	16 000	0.112	7204B
	52	15	1.1	0.6	17.0	18.0	9.30	10 000	15 000	0.150	7304B
25	52	15	1.0	0.6	23.5	14.7	7.65	9 500	14 000	0.135	7205B
	62	17	1.1	0.6	26.5	24.6	12.80	8 500	12 000	0.234	7305B
30	62	17	1.0	0.6	27.0	20.4	13.50	8 500	12 000	0.208	7206X1B
	72	19	1.1	0.6	31.0	34.4	21.20	7 500	10 000	0.362	7306B
35	72	17	1.1	0.6	31.0	27.0	18.30	7 500	10 000	0.295	7207B
	80	21	1.5	1.0	34.5	36.3	24.10	7 000	9 500	0.475	7307B
40	80	18	1.1	0.6	34.0	35.7	25.70	6 700	9 000	0.382	7208B
	90	23	1.5	1.0	39.0	49.7	30.20	6 300	8 500	0.657	7308B
45	85	19	1.1	0.6	37.0	35.7	27.00	6 300	8 500	0.430	7209B
	100	25	1.5	1.0	43.0	58.0	40.10	5 600	7 500	0.875	7309B
50	90	20	1.1	0.6	39.0	37.0	24.80	5 600	7 500	0.485	7210B
	110	27	2.0	1.0	47.0	67.5	47.80	5 000	6 700	1.140	7310B
55	100	21	1.5	1.0	43.0	46.5	29.40	5 300	7 000	0.635	7211B
	120	29	2.0	1.0	52.0	79.0	47.50	4 500	6 000	1.450	7311B
60	110	22	1.5	1.0	47.0	56.0	35.80	4 800	6 300	0.820	7212B
	130	31	2.1	1.1	55.0	90.5	54.00	4 300	5 600	1.810	7312B
65	120	23	1.5	1.0	50.0	64.0	42.20	4 300	5 600	1.020	7213B
	140	33	2.1	1.1	60.0	106.0	75.40	4 000	5 300	2.220	7313B
70	125	24	1.5	1.0	53.0	69.0	46.60	4 300	5 600	1.120	7214B
	150	35	2.1	1.1	64.0	120.0	86.00	3 600	4 800	2.700	7314B
75	130	25	1.5	1.0	56.0	71.0	49.00	4 000	5 300	1.230	7215B
	160	37	2.1	1.1	68.0	125.0	80.00	3 400	4 500	3.150	7315B
80	140	26	2.0	1.0	59.0	80.0	56.00	3 600	4 800	1.500	7216B
	170	39	2.1	1.1	72.0	135.0	90.00	3 200	4 300	4.180	7316B
85	150	28	2.0	1.0	64.0	90.5	64.00	3 400	4 500	1.800	7217B
	180	41	3.0	1.1	76.0	145.0	100.00	3 000	4 000	4.900	7317B
90	160	30	2.0	1.0	67.0	106.0	75.00	3 200	4 300	2.300	7218B
	190	43	3.0	1.1	80.0	155.0	112.00	2 900	3 800	5.760	7318B
95	170	32	2.1	1.1	71.0	121.0	86.50	3 000	4 000	3.000	7219B
	200	45	3.0	1.1	84.0	171.0	129.00	2 500	3 400	6.680	7319B
100	180	34	2.1	1.1	76.0	130.0	91.00	2 800	3 800	3.320	7220B
	215	47	3.0	1.1	90.0	191.0	150.00	2 400	3 200	7.180	7320B
110	240	50	3.0	1.1	99	213.0	208.00	3 200	3 200	10.700	7322B
	120	215	40	2.1	1.1	90	139.2	132.8	2600	3400	5.49
260	480	80	5.0	2.0	195	456.0	702.0	900	1300	66.0	7252B

FŁT Angular Contact Ball Bearings

łożyska kulkowe skośne

Double row with filling slots | Dwurzędowe z rowkiem do wkładania kulek



Four-point contact | Jednorzędowe dwukierunkowe - czteropunktowe

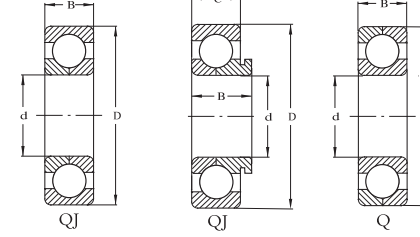


Fig. 1 Fig. 2 Fig. 3



DIMENSIONS					BASIC LOAD RATING		LIMITING SPEEDS		MASS	BASIC DESIGNATIONS	MODIFICATION	DIMENSIONS			BASIC LOAD RATING		MODIFICATION			BASIC DESIGNATIONS	MASS	FIG No	
WYMIARY GŁÓWNE					NOŚNOŚĆ		OBROTY GRANICZNE					MASA	OZNACZENIE PODSTAWOWE	ODMIANY	WYMIARY GŁÓWNE			NOŚNOŚĆ					ODMIANY
d	D	B	r _s	a	dynamic	static	grease*	oil	~	ZZ	2RS				d	D	B/C	dynamic	static	V	MA	FA	~
min	~	min	~	~	C	C ₀	w smarze	w oleju	~			mm	mm		C	C ₀				~	kg		
mm	mm	mm	mm	mm	kN	kN	r/min	r/min	kg			mm	mm		kN	kN					kg		
10	30	14	1.0	19	7.92	5.20	16 000	22 000	0.050	•	•	25	62	17	38.90	27.80					0.25	1	
12	32	15.9	1.0	22	9.68	6.40	15 000	20 000	0.060	•	•	40	80	22/18	59.0	50.0	•				0.45	2	
15	35	15.9	1.0	23	9.13	6.20	13 000	18 000	0.070	•	•	45	85	19	61.5	55.0					0.52	1	
	42	19.0	1.0	27	15.10	10.60	10 000	15 000	0.130	•	•		100	25	93.5	77.0	•				1.04	1	
17	40	17.5	1.0	27	12.50	9.00	10 000	15 000	0.100	•	•	55	120	29	139.0	119.0	•				0.74	1	
	47	22.2	1.0	31	20.90	15.00	9 500	14 000	0.190	•	•		120	29	139.0	119.0					1.58	1	
20	47	20.6	1.0	31	17.20	12.70	9 000	13 000	0.170	•	•	60	130	31	146.0	127.0	•				2.20	1	
	52	22.2	1.1	34	20.90	15.60	8 500	12 000	0.230	•	•	65	100	18	55.0	61.5	•				0.51	1	
25	52	20.6	1.0	35	22.00	13.40	8 000	11 000	0.190	•	•	90	160	30	176.0	186.0	•				2.80	1	
	62	25.4	1.1	41	28.90	26.40	7 500	10 000	0.370	•	•	130	280	58	444.0	580.0	•				19.50	1	
30	62	23.8	1.0	41	27.20	27.00	7 000	9 500	0.320	•	•	140	300	62	486.0	655.0	•				24.00	1	
	72	30.2	1.1	47	44.50	27.00	6 300	8 500	0.590	•	•	150	320	65	400.0	700.0	•				27.80	3	
35	72	27.0	1.1	47	34.50	35.30	6 000	8 000	0.480	•	•	170	260	42	315.0	453.0	•				9.50	1	
	80	34.9	1.5	54	57.00	35.50	5 600	7 500	0.820	•	•	180	380	75	638.0	1030.0	•				47.50	1	
40	80	30.2	1.1	52	49.00	32.00	5 600	7 500	0.650	•	•	220	340	56	431.0	724.0	•				22.80	1	
	90	36.5	1.5	58	53.60	56.60	5 000	6 700	0.950	•	•		460	88	845.0	1530.0	•				73.00	1	
45	85	30.2	1.1	56	52.50	36.50	5 000	6 700	0.710	•	•	260	480	90	493.0	762.0	•				28.50	1	
	100	39.7	1.5	65	73.10	79.40	4 500	6 000	1.400	•	•	320	580	92	984.0	2139.0					121.00	1	
50	90	30.2	1.1	59	60.00	42.50	4 800	6 300	0.760	•	•	360	540	82	680.0	1490.0	•				70.00	1	
	110	44.4	2.0	73	104.00	72.00	4 000	5 300	1.950	•	•	530	710	82	903.0	2390.0		•			105.48	1	
55	100	33.3	1.5	64	57.20	54.00	4 300	5 600	1.050	•	•	630	850	100	1150.0	3400.0			•		162.00	1	
	120	49.2	2.0	80	95.20	88.00	3 600	4 800	2.550	•	•	670	820	69	821.0	2460.0	•				82.40	3	
60	110	36.5	1.5	71	72.10	68.00	3 800	5 000	1.400	•	•	900	1180	122	1610.0	5690.0			•		379.40	1	
	130	54.0	2.5	85	112.00	106.00	3 400	4 500	3.250	•	•												
65	120	38.1	1.5	76	78.10	75.00	3 600	4 800	1.750	•	•												
70	125	39.7	2.1	81	78.10	76.50	3 200	4 300	1.900	•	•												
	150	63.5	2.1	109	143.00	166.00	3 000	4 000	4.870	•	•												
75	130	41.3	2.1	84	84.20	85.20	3 200	4 300	2.100	•	•												
80	140	44.4	2.1	91	101.00	104.00	2 800	3 800	2.650	•	•												
	170	68.3	2.1	113	176.00	212.00	3 600	4 000	6.950	•	•												

* Limiting speeds for bearing in 2RS amount to only two-thirds of the values given in the Table